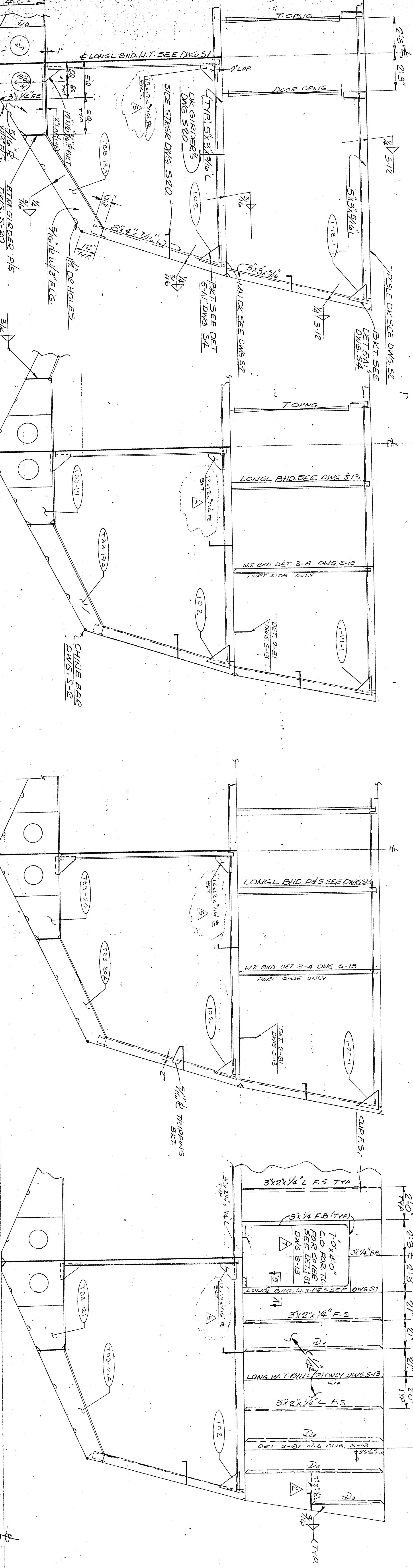
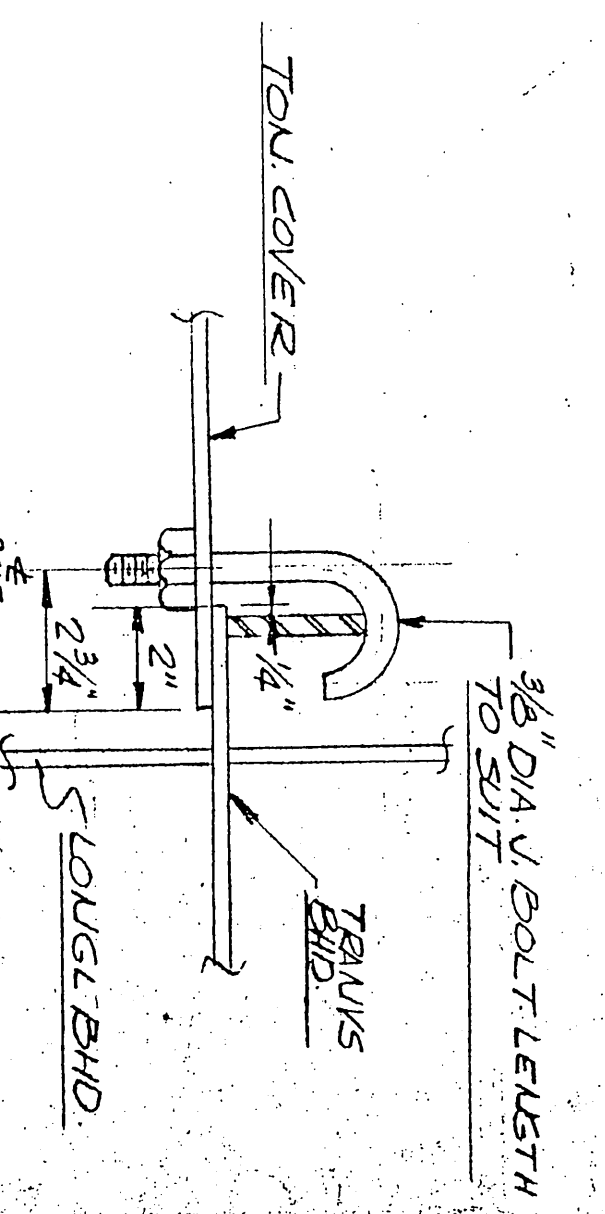


GENERAL NOTES

1. ALL FRAMES ARE VIEWED L&R AFT
2. ALL DIMS TO BE EXCEPT UNLESS NOTED OTHERWISE

SECTION - 5-A
TYP U-BOLT & TONGUE COVER DETAIL
SCALE: 3/16" = 1"



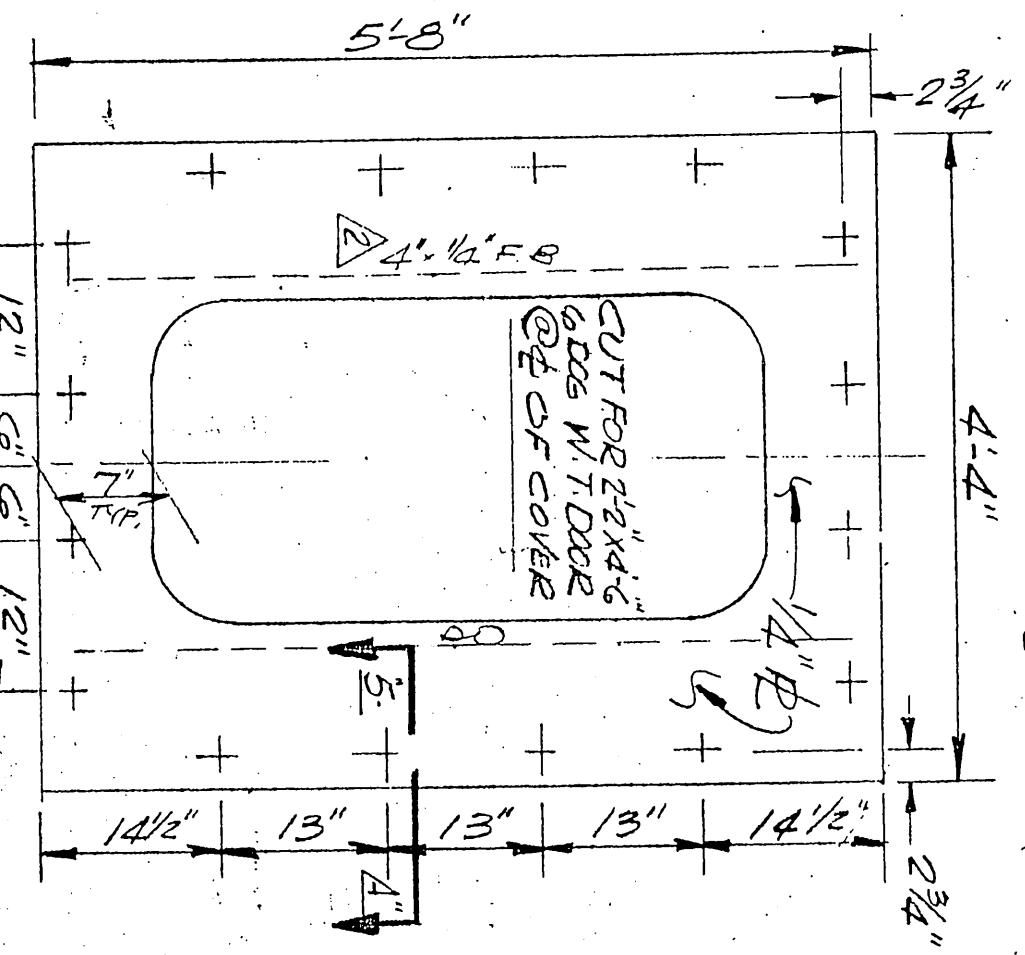
FRAME #21
SIM TO FR #18 EXCEPT AS NOTED

FRAME #20
SIM TO FR #18 EXCEPT AS NOTED

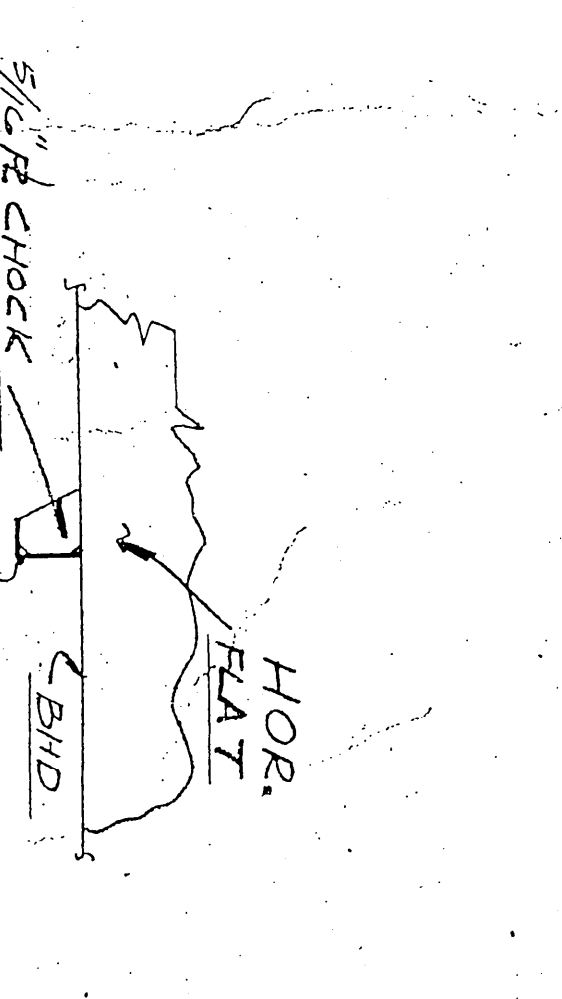
FRAME #19
SIM TO FR #18 EXCEPT AS NOTED

FRAME #18
SIM TO FR #18 EXCEPT AS NOTED

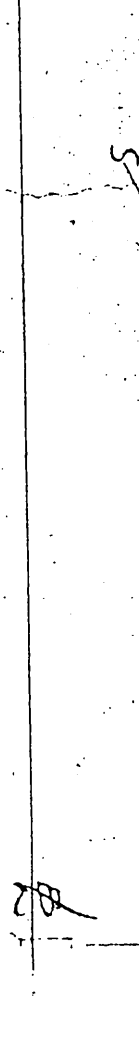
DETAIL - 5-B
TONGUE OPENING COVER
SCALE: 3/16" = 1"



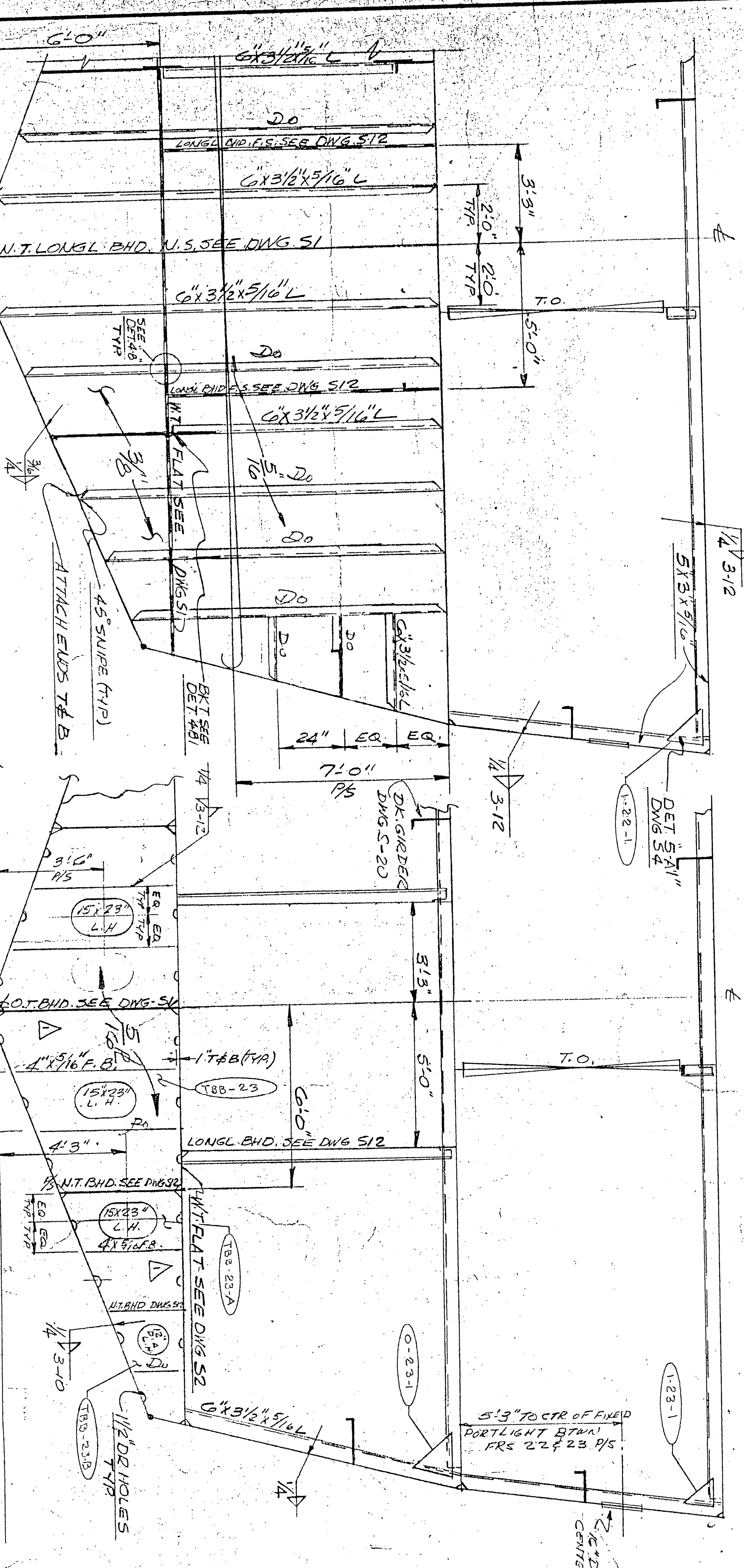
DETAIL - 4-B
HOR. FLAT
STRUT
CHOCK
LITS



DETAIL - 4-A
HOR. FLAT
STRUT
CHOCK
LITS



FRAME #23
SIM TO FR #18 EXCEPT AS NOTED



TYP. INTERMEDIATE FRAME
BETWEEN BUDS 17 & 22

NO.	DATE	BY	CHKD BY	HALTER NO.	DWG. NO.
1	8/5/72	HALTER	HALTER	2182	S5
2	3/75	HALTER	HALTER	2182	S5
3	3/76	HALTER	HALTER	2182	S5

US NAVAL SHIP SYSTEMS COMMAND
OCEANOGRAPHIC RESEARCH SHIP
AGOR (UTILITY) CLASS
HALTER MARINE SERVICES, INC.
P.O. BOX 59266 NEW ORLEANS, LA 70159

NO.	DESCRIPTION	DATE	BY
1	REVISED TO O FOR DIGITAL JITTER ON P&L 5-17	8/5/72	HALTER
2	ADDED PORTLIGHT V/2 BROW P&S 22233	8/5/72	HALTER
3	REVISED P&S 19, 20, & 21 NEW MID-OK	8/5/72	HALTER
4	ADDED PORTLIGHT V/2 BROW P&S 22233	8/5/72	HALTER
5	REVISED P&S 19, 20, & 21 NEW MID-OK	8/5/72	HALTER
6	ADDED PORTLIGHT V/2 BROW P&S 22233	8/5/72	HALTER
7	REVISED TO O FOR DIGITAL JITTER ON P&L 5-17	8/5/72	HALTER

NO.	DESCRIPTION	DATE	BY
1	REVISED TO O FOR DIGITAL JITTER ON P&L 5-17	8/5/72	HALTER
2	ADDED PORTLIGHT V/2 BROW P&S 22233	8/5/72	HALTER
3	REVISED P&S 19, 20, & 21 NEW MID-OK	8/5/72	HALTER
4	ADDED PORTLIGHT V/2 BROW P&S 22233	8/5/72	HALTER
5	REVISED P&S 19, 20, & 21 NEW MID-OK	8/5/72	HALTER
6	ADDED PORTLIGHT V/2 BROW P&S 22233	8/5/72	HALTER
7	REVISED TO O FOR DIGITAL JITTER ON P&L 5-17	8/5/72	HALTER

NO.	DESCRIPTION	DATE	BY
1	REVISED TO O FOR DIGITAL JITTER ON P&L 5-17	8/5/72	HALTER
2	ADDED PORTLIGHT V/2 BROW P&S 22233	8/5/72	HALTER
3	REVISED P&S 19, 20, & 21 NEW MID-OK	8/5/72	HALTER
4	ADDED PORTLIGHT V/2 BROW P&S 22233	8/5/72	HALTER
5	REVISED P&S 19, 20, & 21 NEW MID-OK	8/5/72	HALTER
6	ADDED PORTLIGHT V/2 BROW P&S 22233	8/5/72	HALTER
7	REVISED TO O FOR DIGITAL JITTER ON P&L 5-17	8/5/72	HALTER

NO.	DESCRIPTION	DATE	BY
1	REVISED TO O FOR DIGITAL JITTER ON P&L 5-17	8/5/72	HALTER
2	ADDED PORTLIGHT V/2 BROW P&S 22233	8/5/72	HALTER
3	REVISED P&S 19, 20, & 21 NEW MID-OK	8/5/72	HALTER
4	ADDED PORTLIGHT V/2 BROW P&S 22233	8/5/72	HALTER
5	REVISED P&S 19, 20, & 21 NEW MID-OK	8/5/72	HALTER
6	ADDED PORTLIGHT V/2 BROW P&S 22233	8/5/72	HALTER
7	REVISED TO O FOR DIGITAL JITTER ON P&L 5-17	8/5/72	HALTER

NO.	DESCRIPTION	DATE	BY
1	REVISED TO O FOR DIGITAL JITTER ON P&L 5-17	8/5/72	HALTER
2	ADDED PORTLIGHT V/2 BROW P&S 22233	8/5/72	HALTER
3	REVISED P&S 19, 20, & 21 NEW MID-OK	8/5/72	HALTER
4	ADDED PORTLIGHT V/2 BROW P&S 22233	8/5/72	HALTER
5	REVISED P&S 19, 20, & 21 NEW MID-OK	8/5/72	HALTER
6	ADDED PORTLIGHT V/2 BROW P&S 22233	8/5/72	HALTER
7	REVISED TO O FOR DIGITAL JITTER ON P&L 5-17	8/5/72	HALTER

NO.	DESCRIPTION	DATE	BY
1	REVISED TO O FOR DIGITAL JITTER ON P&L 5-17	8/5/72	HALTER
2	ADDED PORTLIGHT V/2 BROW P&S 22233	8/5/72	HALTER
3	REVISED P&S 19, 20, & 21 NEW MID-OK	8/5/72	HALTER
4	ADDED PORTLIGHT V/2 BROW P&S 22233	8/5/72	HALTER
5	REVISED P&S 19, 20, & 21 NEW MID-OK	8/5/72	HALTER
6	ADDED PORTLIGHT V/2 BROW P&S 22233	8/5/72	HALTER
7	REVISED TO O FOR DIGITAL JITTER ON P&L 5-17	8/5/72	HALTER

NO.	DESCRIPTION	DATE	BY
1	REVISED TO O FOR DIGITAL JITTER ON P&L 5-17	8/5/72	HALTER
2	ADDED PORTLIGHT V/2 BROW P&S 22233	8/5/72	HALTER
3	REVISED P&S 19, 20, & 21 NEW MID-OK	8/5/72	HALTER
4	ADDED PORTLIGHT V/2 BROW P&S 22233	8/5/72	HALTER
5	REVISED P&S 19, 20, & 21 NEW MID-OK	8/5/72	HALTER
6	ADDED PORTLIGHT V/2 BROW P&S 22233	8/5/72	HALTER
7	REVISED TO O FOR DIGITAL JITTER ON P&L 5-17	8/5/72	HALTER

NO.	DESCRIPTION	DATE	BY
1	REVISED TO O FOR DIGITAL JITTER ON P&L 5-17	8/5/72	HALTER
2	ADDED PORTLIGHT V/2 BROW P&S 22233	8/5/72	HALTER
3	REVISED P&S 19, 20, & 21 NEW MID-OK	8/5/72	HALTER
4	ADDED PORTLIGHT V/2 BROW P&S 22233	8/5/72	HALTER
5	REVISED P&S 19, 20, & 21 NEW MID-OK	8/5/72	HALTER
6	ADDED PORTLIGHT V/2 BROW P&S 22233	8/5/72	HALTER
7	REVISED TO O FOR DIGITAL JITTER ON P&L 5-17	8/5/72	HALTER

NO.	DESCRIPTION	DATE	BY
1	REVISED TO O FOR DIGITAL JITTER ON P&L 5-17	8/5/72	HALTER
2	ADDED PORTLIGHT V/2 BROW P&S 22233	8/5/72	HALTER
3	REVISED P&S 19, 20, & 21 NEW MID-OK	8/5/72	HALTER
4	ADDED PORTLIGHT V/2 BROW P&S 22233	8/5/72	HALTER
5	REVISED P&S 19, 20, & 21 NEW MID-OK	8/5/72	HALTER
6	ADDED PORTLIGHT V/2 BROW P&S 22233	8/5/72	HALTER
7	REVISED TO O FOR DIGITAL JITTER ON P&L 5-17	8/5/72	HALTER